

INSTRUCTIONS

INSTALLING THE TEMPLATES

- CUT BOTTOM TEMPLATE ALONG FINISH FLOOR AND FINISH WALL CUT LINES.
- CUT TOP TEMPLATE ALONG FINISH WALL AND MATCH CUT LINES.
- ATTACH BOTTOM TEMPLATE TO WALL.
 - IF REQUIRED FOR MOUNTING THE TEMPLATE FLAT ON THE WALL.
 - CUT OUT SHADED PORTION OF TEMPLATE ALONG LAVATORY CUT LINES.
 - NOTCH AROUND WATER CLOSET AND FLUSH VALVE AS REQUIRED. MAINTAIN UPPER PORTION OF THE MOUNTING ZONE FOR WATER CLOSET CENTERLINE VERIFICATION.
 - THE BOTTOM OF THE TEMPLATE SHALL BE FLUSH AND LEVEL WITH THE FINISH FLOOR.
 - THE RIGHT SIDE OF THE TEMPLATE SHALL BE FLUSH AND PLUMB WITH THE WATER CLOSET SIDE FINISH WALL.
- ***** STOP AND VERIFY THE FOLLOWING *****
 - THE CENTERLINE OF THE INSTALLED WATER CLOSET IS LOCATED WITHIN THE MOUNTING ZONE.
 - THE INSTALLED LAVATORY, WALLS, AND ANY OTHER FIXTURES / OBSTRUCTIONS ARE LOCATED OUTSIDE THE WATER CLOSET CLEAR FLOOR SPACE.
 - THE FLUSH VALVE IS:
 - WITH BED PAN WASHER, IS MOUNTED MIN. BELOW 48" AFF TO CONTROL AND MIN. 3 1/2" OFF REAR WALL.
 - WITHOUT BED PAN WASHER, IS MOUNTED MIN. 1 1/2" BELOW THE REAR GRAB BAR.

IF YES TO ALL - PROCEED WITH REMAINING STEPS TO INSTALL WATER CLOSET REAR WALL ACCESSORIES.
IF NO TO ANY - STOP. THIS WATER CLOSET DOES NOT COMPLY WITH THE ACCESSIBILITY STANDARDS.
DO NOT PROCEED WITH INSTALLING ANY WATER CLOSET REAR WALL ACCESSORIES AND CONTACT ARCHITECT FOR FURTHER INSTRUCTIONS.
- ATTACH TOP TEMPLATE TO WALL.
 - IF REQUIRED FOR MOUNTING THE TEMPLATE FLAT ON THE WALL.
 - CUT OUT SHADED PORTION OF TEMPLATE ALONG LAVATORY CUT LINES.
 - NOTCH AROUND WATER CLOSET AND FLUSH VALVE AS REQUIRED.
 - THE MATCH / CUT LINES FROM BOTH TEMPLATES SHALL ALIGN.
 - THE RGB MATCH LINE SHALL BE IN LINE WITH THE CENTERLINE OF THE INSTALLED TOILET.

NOTE: BASED ON THE LOCATION OF THE TOILET, SOME OF THE NOTES / DIMENSION LINES MAY NOT ALIGN BETWEEN TEMPLATES.

INSTALLING THE ELEMENTS:

- LOCATE REAR GRAB BAR (RGB) - HOLE PUNCH MARK THE CENTER OR MOUNTING POINTS OF EACH MOUNTING FLANGE.
- LOCATE REMAINING WATER CLOSET REAR WALL DISPENSERS / ACCESSORIES - HOLE PUNCH MARK THE MOUNTING POINTS FOR EACH DISPENSER / ACCESSORY.
 - NO SURFACE MOUNTED DISPENSER / ACCESSORY SHALL EXTEND INTO THE SHADED AREA AROUND A GRAB BAR. RECESSED MOUNTED DISPENSERS / ACCESSORIES ARE PERMITTED TO EXTEND INTO THE SHADED AREA.
 - THE ENTIRE OPERABLE / USABLE PART SHALL BE LOCATED BETWEEN THE MIN AND MAX REACH LINES.
 - IF THE ACCESSORY IS OR HAS A SHELF, THE MIN REACH HEIGHT IS 40" AFF.

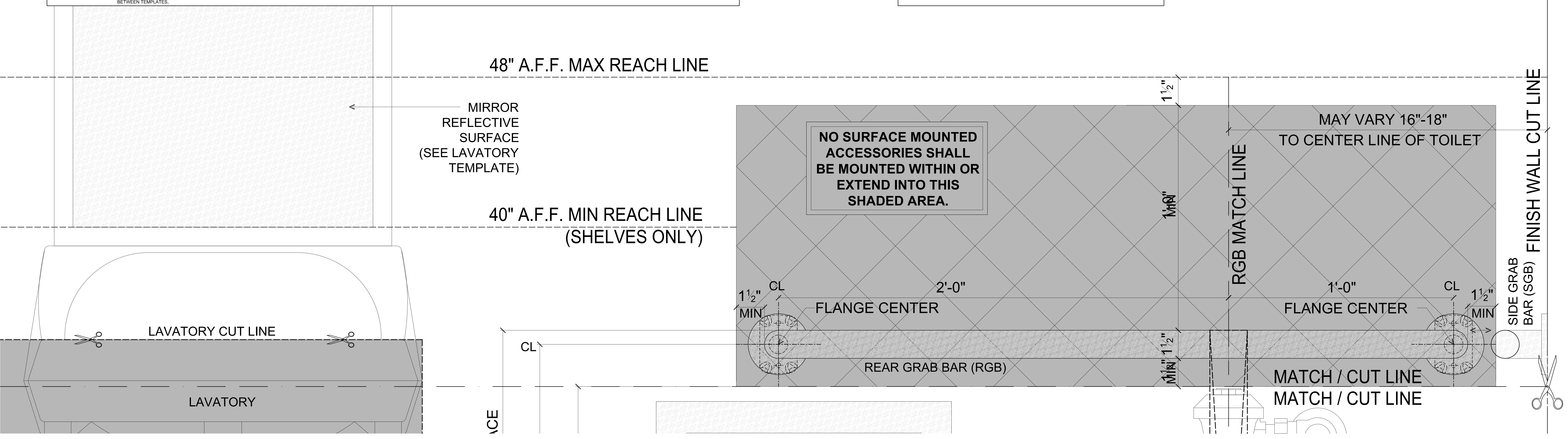
NOTE: ONLY SEAT COVER DISPENSER, SANITARY NAPKIN DISPOSAL UNIT, HOOKS, SHELVES, OR BED PAN WASHER MAY BE LOCATED WITHIN THE WATER CLOSET CLEAR FLOOR SPACE. NO OTHER FIXTURES OR OBSTRUCTIONS MAY BE LOCATED WITHIN THE CFS.
- REMOVE TEMPLATES.
- INSTALL TOILET REAR GRAB BAR (RGB):
 - CONFIRM THE GRAB BAR AND INSTALLATION METHOD SPECIFIED COMPLY WITH 2010 ADA STANDARDS SECTION 609. CONTACT ARCHITECT FOR FURTHER INSTRUCTIONS.
 - THE REAR GRAB BAR SHALL BE MOUNTED LEVEL AND PARALLEL TO THE FINISH FLOOR. THE TOP OF THE GRAB BAR SHALL BE LEVEL WITH THE SIDE GRAB BAR.
 - NON-LEVEL FLOORS: IF FLOOR IS NOT LEVEL, THE GRAB BAR SHALL STILL BE LEVEL AND THE ENTIRE LENGTH OF THE TOP OF THE GRIPPING SURFACE SHALL BE LOCATED WITHIN THE RANGE SHOWN.
- INSTALL REMAINING WATER CLOSET REAR WALL DISPENSERS / ACCESSORIES:
 - CONFIRM EACH DISPENSER / ACCESSORY SPECIFIED DOES NOT REQUIRE PINCHING, TIGHT GRASPING, TWISTING OF THE WRIST, OR MORE THAN 5 POUNDS OF PRESSURE TO OPERATE.
 - NOTE: IF ANY OF THE ISSUES LISTED ABOVE EXIST, DO NOT PROCEED WITH INSTALLING THE DISPENSER / ACCESSORY AND CONTACT ARCHITECT FOR FURTHER INSTRUCTIONS.

ABBREVIATIONS:

AFF	ABOVE FINISHED FLOOR
BTM	BOTTOM
CFS	CLEAR FLOOR SPACE
CL	CENTER LINE
MAX	MAXIMUM
MIN	MINIMUM
MISC	MISCELLANEOUS
RGB	REAR GRAB BAR
SCD	SEAT COVER DISPENSER
SGB	SIDE GRAB BAR
TTD	TOILET TISSUE DISPENSER
TTDZ	TOILET TISSUE DISPENSER ZONE
VGB	VERTICAL GRAB BAR

WATER CLOSET REAR WALL TEMPLATE [RIGHT - TOP]

© HCA - 2017



FINISH WALL CUT LINE

SIDE GRAB BAR (SGB)

MATCH / CUT LINE