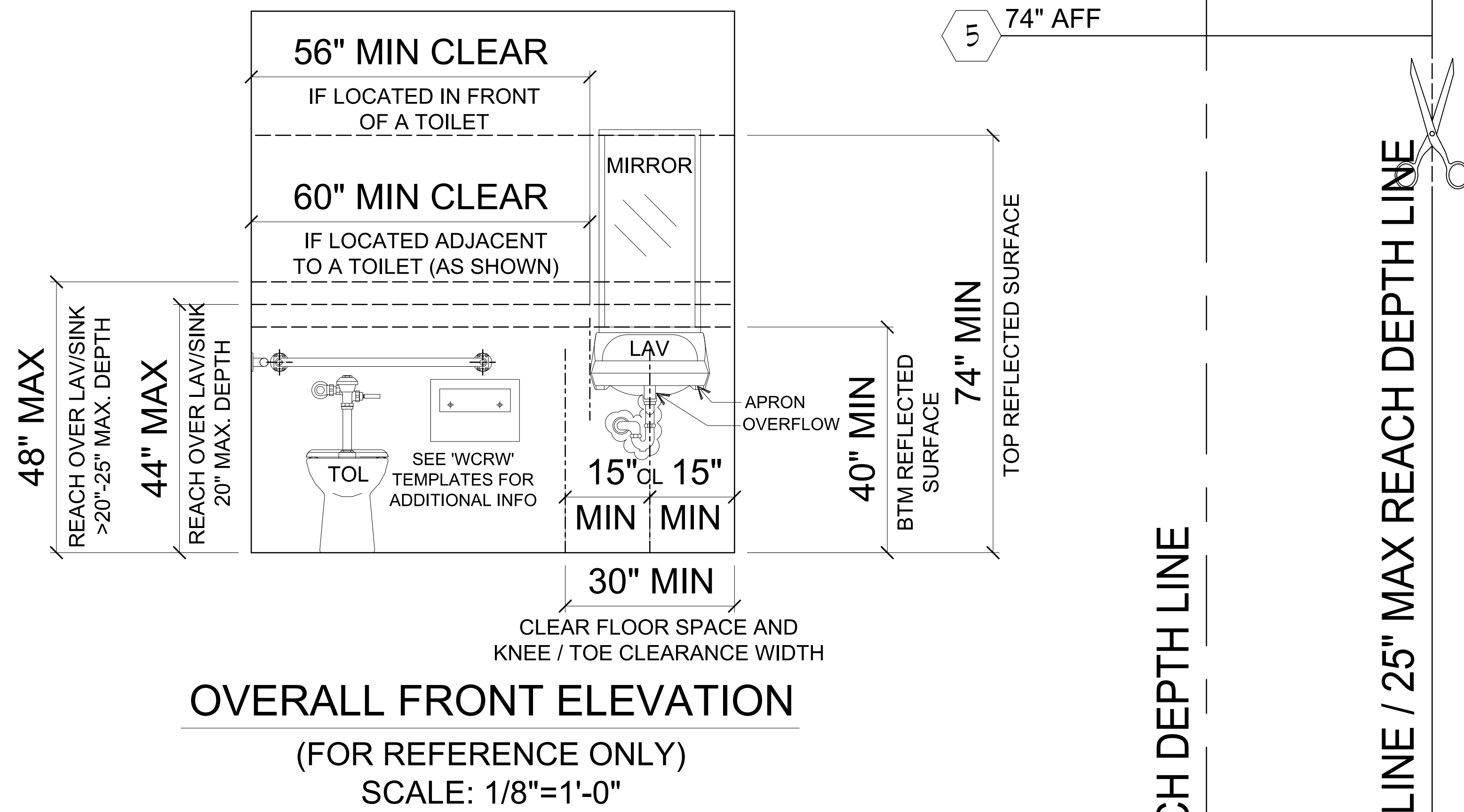


THIS TEMPLATE IS BASED ON THE 2010 AMERICANS WITH DISABILITIES ACT STANDARDS. INSTALLER SHALL COORDINATE WITH CONSTRUCTION DOCUMENTS AND STATE AND LOCAL BUILDING CODES FOR VARIATIONS TO THIS TEMPLATE.

ABBREVIATIONS:
 AFF ABOVE FINISHED FLOOR
 BTM BOTTOM
 CFS CLEAR FLOOR SPACE
 LAV LAVATORY
 MAX MAXIMUM
 MIN MINIMUM
 MISC MISCELLANEOUS

CODED NOTES
 1. 40" MIN REACH (SHELVES)
 2. 40" MIN TO BTM OF MIRROR REFLECTIVE SURFACE (OVER LAVATORY / COUNTER)
 3. 44" MAX FORWARD REACH (OVER OBSTRUCTION > 20" DEEP)
 4. 48" MAX FORWARD REACH (UNOBSTRUCTED)
 5. 74" MIN TO TOP OF MIRROR REFLECTIVE SURFACE



INSTRUCTIONS

INSTALLING THE TEMPLATE

- CUT TEMPLATE ALONG FINISH WALL AND FINISH FLOOR.
- MEASURE DEPTH OF INSTALLED LAVATORY FROM FRONT EDGE TO FINISH WALL.
- MARK MEASUREMENT ON TEMPLATE. THIS IS YOUR NEW FOLD / CUT LINE.
NOTE: IF MEASUREMENT IS GREATER THAN 25", NO ACCESSORIES MAY BE MOUNTED ON WALL BEHIND LAVATORY EXCEPT:
A. MIRROR AND ACCESSORIES WHOSE OPERABLE PARTS WILL BE 25" MAX FROM FRONT EDGE OF LAVATORY WHEN MOUNTED ON THE WALL.
- FOLD / CUT TEMPLATE ALONG NEW LINE CREATED IN PREVIOUS STEP.
- ATTACH LAVATORY TEMPLATE TO SIDE WALL.
A. IF REQUIRED FOR MOUNTING THE TEMPLATE FLAT ON THE WALL:
1. CUT OUT SHADED PORTION OF TEMPLATE ALONG KNEE / TOE CLEARANCE AND LAVATORY RIM CUT LINES.
2. NOTCH AROUND BACK SPLASH AS REQUIRED. DO NOT CUT FOR A SIDE SPLASH.
NOTE: IF SINK IS NOT IMMEDIATELY ADJACENT TO A WALL, THE TEMPLATE WILL NEED TO BE MOUNTED TO SOMETHING STIFF ENOUGH TO ALLOW THE TEMPLATE TO STAND UPRIGHT WITHOUT SAGGING.
B. THE BOTTOM OF THE TEMPLATE SHALL BE FLUSH AND LEVEL WITH THE FINISH FLOOR.
C. THE LAVATORY MATCH LINE SHALL BE IN LINE WITH THE FRONT EDGE OF THE SINK / COUNTER (WHICHEVER EXTENDS FURTHER FROM THE BACK WALL).
D. THE NEW FOLD / CUT LINE SHALL BE FLUSH AND PLUMB WITH THE SINK REAR FINISH WALL.

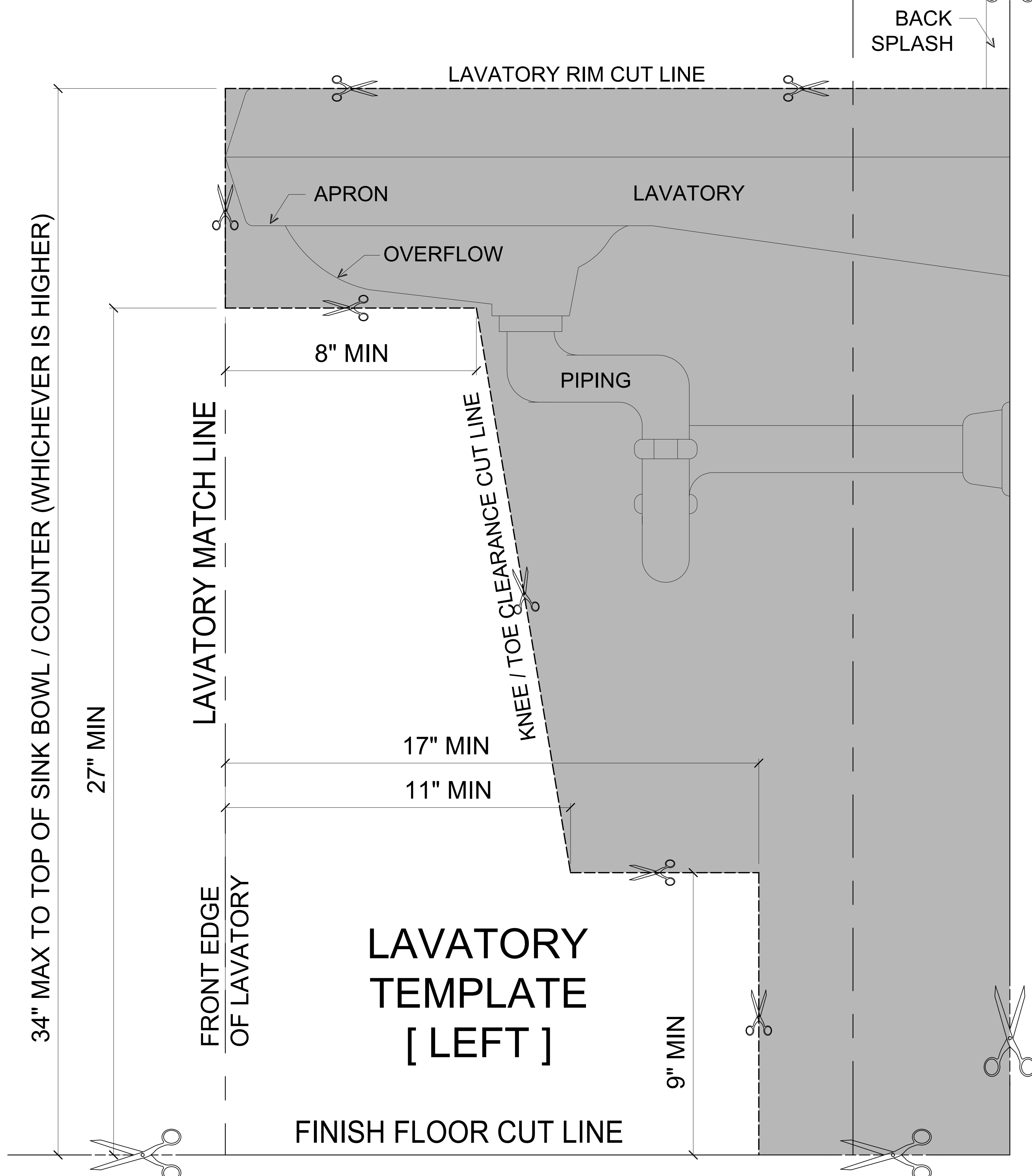
***** STOP AND VERIFY THE FOLLOWING *****

- THE SINK, APRON, PIPING, OR PIPE ENCLOSURE / PROTECTION DO NOT EXTEND BEYOND THE KNEE / TOE CLEARANCE CUT LINE.
NOTE: DO NOT INCLUDE THE OVERFLOW IN THIS EVALUATION.
- THE LAVATORY RIM DOES NOT EXTEND ABOVE THE LAVATORY RIM CUT LINE.
- THE LAVATORY CLEAR FLOOR SPACE AND KNEE / TOE CLEARANCE WIDTH IS MIN 30" WIDE TO ANY OBSTRUCTION EXTENDING BELOW 27" AFF AND CENTERED ON THE LAVATORY. (SEE FRONT ELEVATION)
- THE LAVATORY IS NOT MOUNTED WITHIN THE CLEAR FLOOR SPACE FOR A TOILET. (SEE FRONT ELEVATION)

IF YES TO ALL - PROCEED WITH REMAINING STEPS TO INSTALL LAVATORY ACCESSORIES.
IF NO TO ANY - STOP. THIS LAVATORY DOES NOT COMPLY WITH THE ACCESSIBILITY STANDARDS.
DO NOT PROCEED WITH INSTALLING ANY LAVATORY ACCESSORIES AND CONTACT ARCHITECT FOR FURTHER INSTRUCTIONS.

INSTALLING THE ELEMENTS:

- LOCATE LAVATORY DISPENSERS / ACCESSORIES - HOLE PUNCH MARK THE MOUNTING POINTS FOR EACH DISPENSER / ACCESSORY.
A. NO SURFACE MOUNTED DISPENSER / ACCESSORY SHALL EXTEND INTO THE SHADED AREA AROUND A GRAB BAR. (SEE WATER CLOSET TEMPLATES FOR INFORMATION) RECESSED MOUNTED DISPENSERS / ACCESSORIES ARE PERMITTED TO EXTEND INTO THE SHADED AREA.
B. THE ENTIRE OPERABLE / USABLE PART SHALL BE LOCATED BELOW THE MAX REACH LINE BASED ON THE REACH DEPTH.
1. IF THE 20" REACH DEPTH LINE IS STILL VISIBLE ON THE TEMPLATE, THE MAX REACH HEIGHT IS 44" AFF.
2. IF THE 20" REACH DEPTH LINE IS NOT VISIBLE ON THE TEMPLATE, THE MAX REACH HEIGHT IS 48" AFF.
3. IF THE ACCESSORY IS OR HAS A SHELF, THE MIN REACH HEIGHT IS 40" AFF.
4. MIRRORS OVER LAVATORY / COUNTER SHALL BE MIN 40" AFF TO BOTTOM OF REFLECTED SURFACE AND MIN 74" AFF TO TOP OF REFLECTED SURFACE.
- REMOVE THE TEMPLATE.
- INSTALL LAVATORY DISPENSERS / ACCESSORIES:
CONFIRM EACH DISPENSER / ACCESSORY SPECIFIED DOES NOT REQUIRE PINCHING, TIGHT GRASPING, TWISTING OF THE WRIST, OR MORE THAN 5 POUNDS OF PRESSURE TO OPERATE.
NOTE: IF ANY OF THE ISSUES LISTED ABOVE EXIST, DO NOT PROCEED WITH INSTALLING THE DISPENSER / ACCESSORY AND CONTACT ARCHITECT FOR FURTHER INSTRUCTIONS.



© HCA - 2017